



AL-JAZIAH EST. FOR HVAC

Efficiency Meets Comfort

Shaping **Air.** Powering **Comfort.**

Cool. Precise. Reliable.

Bytset
SOLUTIONS



About Us

Al-Jaziah Est. for HVAC was established in 2015 in Tabuk, Saudi Arabia. Our company specializes in the manufacturing and supply of ductwork and accessories for central air conditioning systems.

With a highly skilled team and a state-of-the-art computerized duct forming line, we deliver products with precision, reliability, and efficiency. Al-Jaziah has grown to become one of the region's most trusted names in the HVAC industry by consistently meeting client expectations and industry standards.

We offer GI ducts, pre-insulated ducts, fittings, dampers, grills, and other key HVAC components. With a focus on quality and on-time delivery, Al-Jaziah is a trusted choice for contractors and developers across the Kingdom.





Our Mission

To provide high-quality HVAC ducting and accessories through advanced manufacturing techniques, ensuring maximum customer satisfaction and reliable performance.



Our Vision

To be a leading HVAC manufacturer and supplier in the Kingdom of Saudi Arabia, recognized for innovation, quality, and customer-centric service.

Core Values



Quality Excellence



Customer Focus



Integrity & Trust



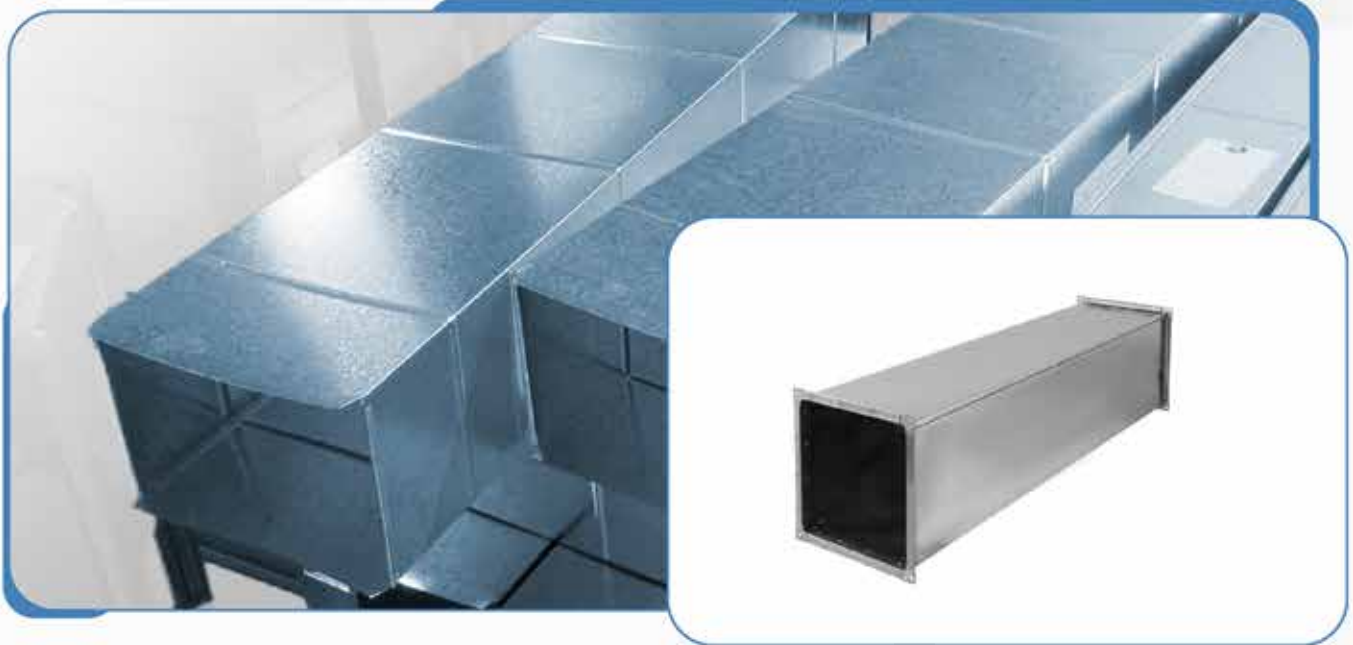
Innovation



Safety & Compliance

Products & Services

Rectangular Duct and Accessories



- * Straight Duct is a basic component of the Rectangular Duct System
- * Extent of produced lengths is from 50mm up to 2000 mm
- * It is possible to attach another component on the duct (extension, covering grid, blinder, etc.)



Elbow

- * We are able to produce non standard angles and radiuses of Elbow. There is a possibility to use turning vane.
- * We are able to produce non standard angles and radiuses of Elbow Edge.



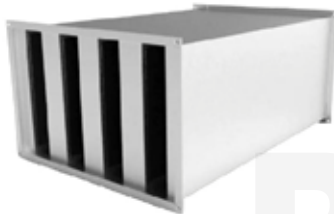
* Elbow Edge

We are able to produce non standard angles and radiuses of Elbow Edge.



* Duct with Elbow

We are able to produce non standard angles and radiuses of Elbow Edge.



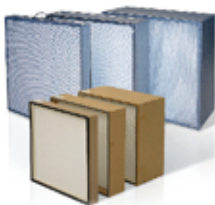
* Cellular Silencer

Cellular Silencer (TH) is used for lowering a level of acoustic noise spreading over ventilation duct. Standard Silencer Cells are produced with turning walls, which lower aerodynamic drag and lowers pressure loss of Silencer.



* Covering Grid

Covering Grid is supposed to stop entry of foreign objects into HVAC ducts.



* Filtration Cassette

Level of filtration depends on used filtration material. G3 level of filtration is standardly used



* Branch

Branch is standardly strengthen by plate breaking. Always enclose a drawing.



* **Covering Grid**

Covering Grid is supposed to stop entry of foreign objects into HVAC ducts.



* **Offset**

Offset is used for connecting air ducts which are not in a row.



* **Rectangular Duct Reducer**

Standard length of Rectangular Duct Reducer is 300mm or 500mm.



* **Square To Round**

Standard length of Square to Round Transition is 300mm or 500mm.



* **TRI WYE**

TRI WYE is standardly strengthened by plate bracing



* **Duct Splitter**

Tee is reinforced with plate breaking; non-standard parts like turning vane can be produced.



* **Duct Extension**

Rectangular and Round Extension.



* **Flexible Duct Connector**

TRI WYE is standardly strengthened by plate bracing

Round Duct and Accessories



* Spiral Duct

On the regular basis Spiral Pipe is made from galvanized sheet steel. There is also a possibility to produce Spiral Pipe in various lengths, different thicknesses of material and also to make out of stainless steel.



* Spiral Elbow 15°, 30°, 45°, 60°, 75°

Spiral Elbows can be made with custom diameters and angles, with options for flanges or clinch connections.



* Round TEE 90°

Blinders and drain attachments can be added to Round Tees; custom sizes and materials available.



* Round Y 30°

We are able to produce Round Y with atypical diameters and angles made out of different materials.



* Symmetrical Round Transition

Length of Round Transition depends on diameter ratio. This ratio is standardly up to ca. 15. We are able to produce atypical diameters and angles made out of different materials.



* Manual Volume Damper

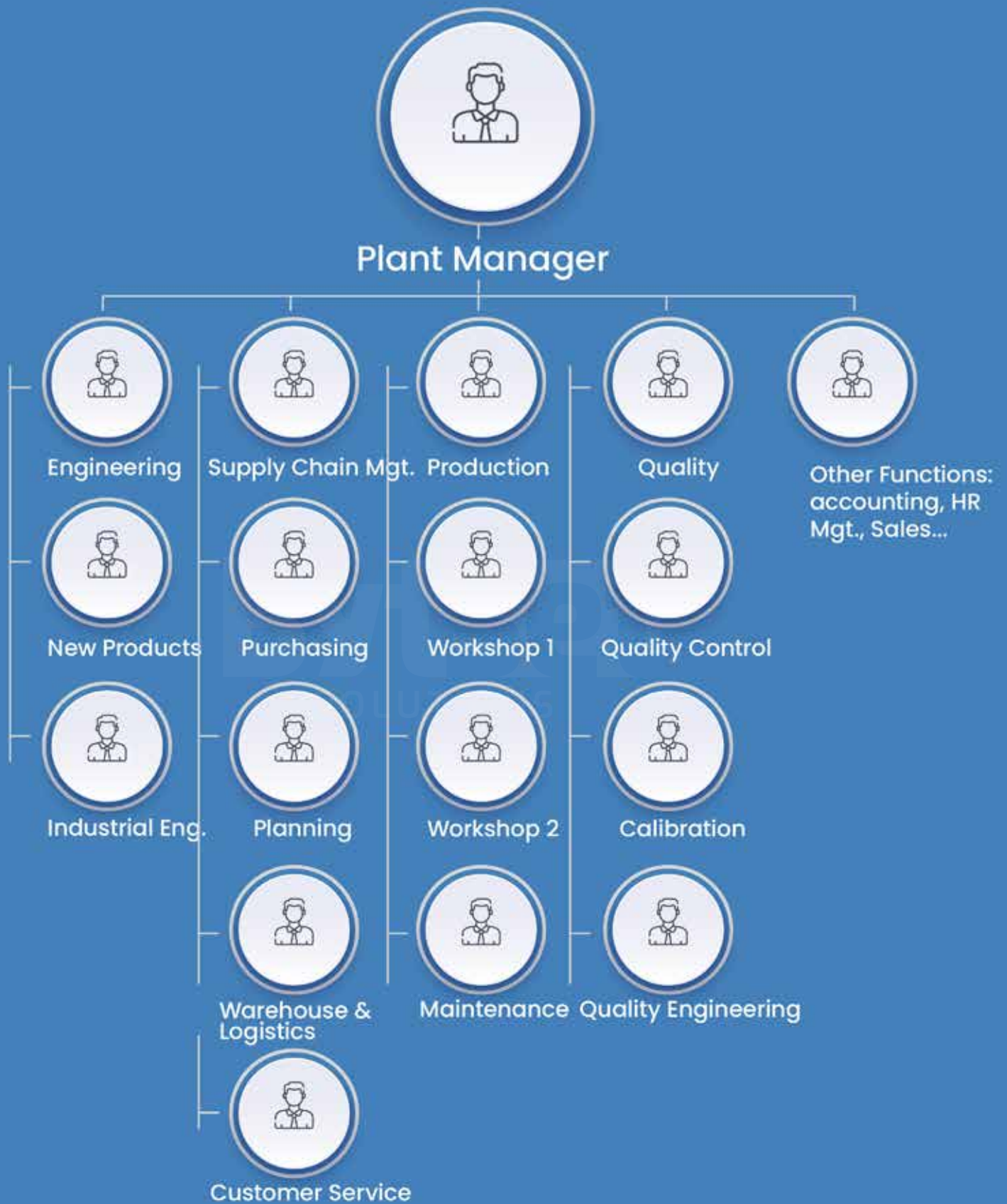
Manual Controlled Damper Sleeve is used to regulate airflow in ductwork up to 80° C without dust, grease, chemicals or other pollution. Manual Damper Handle control can be made out of plastic or metallic material. Damper cannot be 100% closed. Desired position is regulated by Damper Handle.



* Rectangular Duct Reducer

Round Silencer is used to reduce noise, which spreads through HVAC ductwork. It is made out of 2 concentric cylinders with anti noise isolation. Inner coat is perforated, ended by extensions used to mount the Silencer into round ductwork. The bumper is installed by inserting into the duct. Standard length of Silencer is 900mm.

Organization Chart



Smart **HVAC.** Reliable Comfort.



AL-JAZIAH EST. FOR HVAC
Efficiency Meets Comfort

0565422381 0511093281
aljazyah.sa@gmail.com
Aljaziah.com
Tabuk, Saudi Arabia